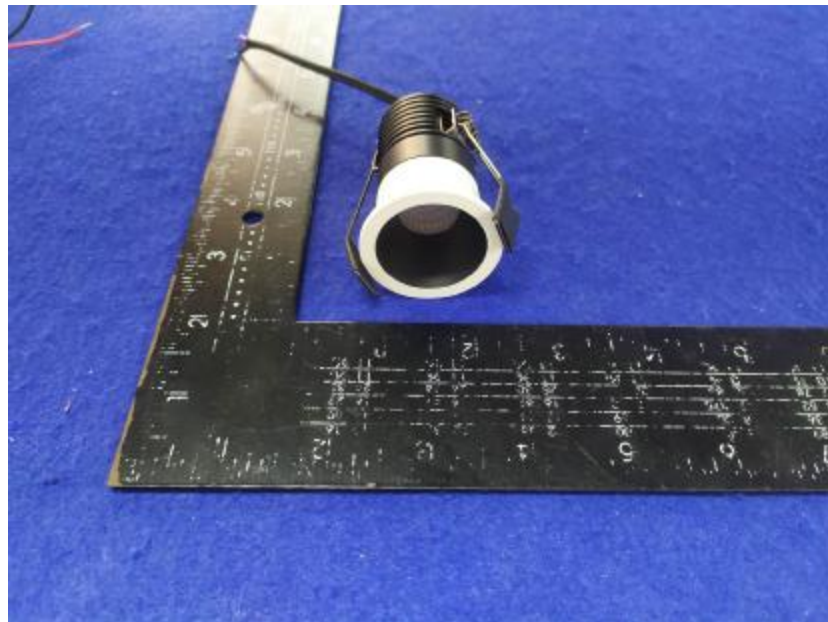


Luminaire Photograph



Light Output Ratio:	71.7%	
Luminaire Power:	3.015 W	
SHR Nominal:	0.50	Calculated using the TM5
SHR Maximum:	0.65	fine grid method.

C Range: 0 - 360DEG
C Interval: 30.0DEG
Test Speed: HIGH
Temperature: 25.3DEG
Operators: Zoe
Test Date: 2020-06-04

g Range: 0 - 180DEG
g Interval: 1.0DEG
Test System: EVERFINE GO-SPEX500_V1 SYSTEM V2.00.416
Humidity: 65.0%
Test Distance: 3.160m [K=1.0000]
Remarks: LAMP: CXB1304-0000-000430G Ra: 90
REFLECTOR: AA-022A-F 36R
NOT DRIVER: 9V 350mA
30minutes warm-up

LUMINOUS INTENSITY DISTRIBUTION DIAGRAM

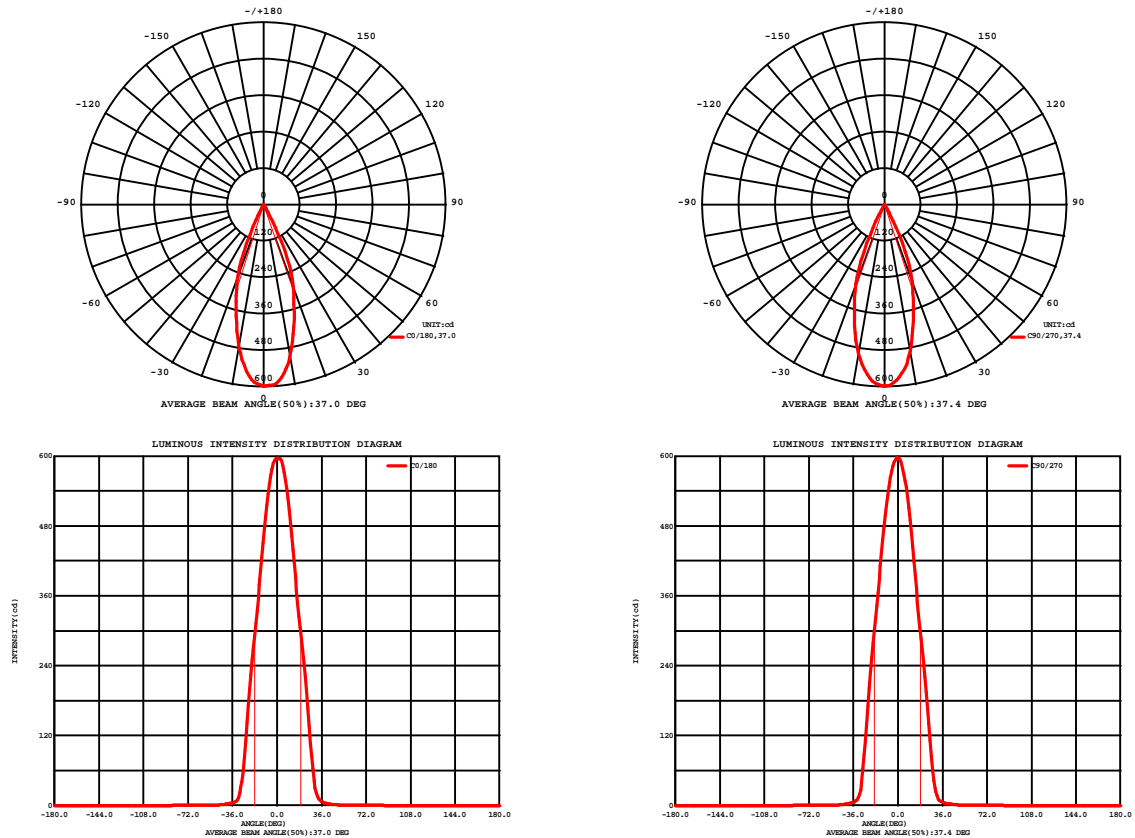


Fig. C0/C180

Fig. C90/C270

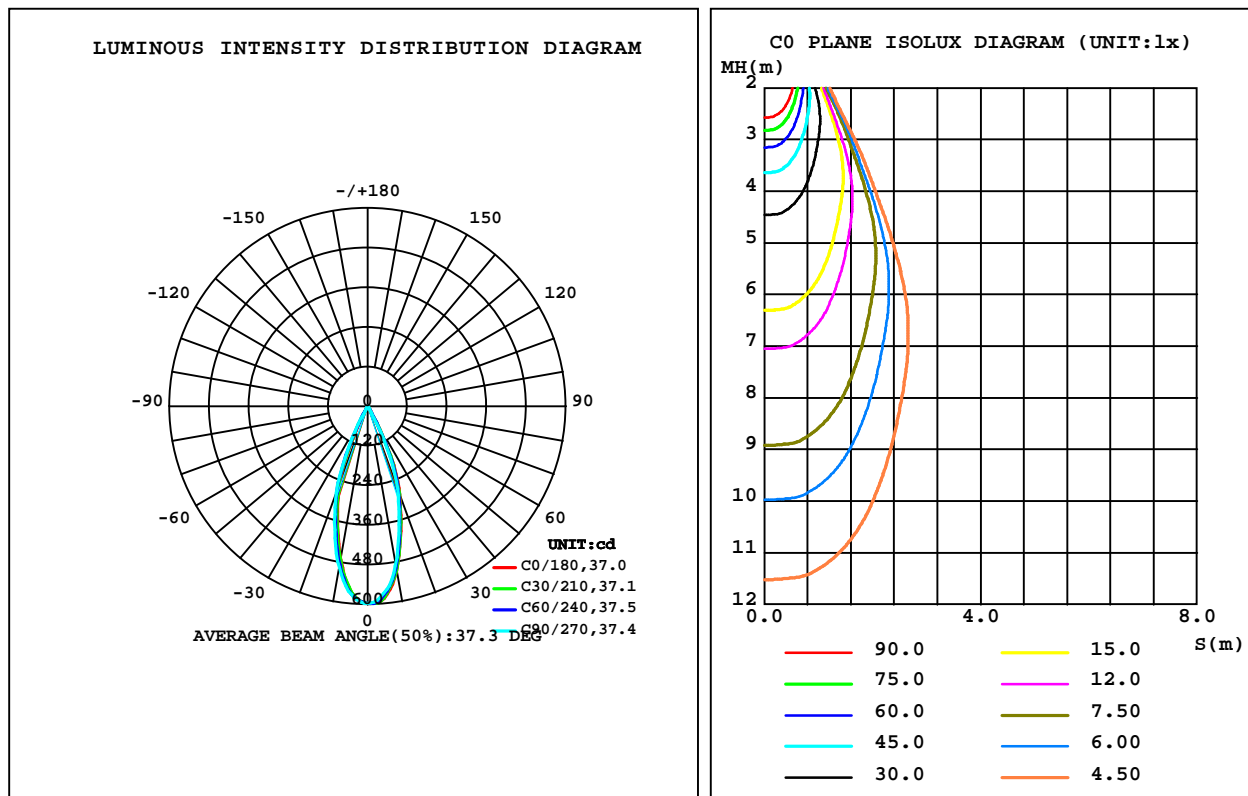
C Range: 0 - 360DEG
C Interval: 30.0DEG
Test Speed: HIGH
Temperature: 25.3DEG
Operators: Zoe
Test Date: 2020-06-04

Range: 0 - 180DEG
Interval: 1.0DEG
Test System: EVERFINE GO-SPEX500_V1 SYSTEM V2.00.416
Humidity: 65.0%
Test Distance: 3.160m [K=1.0000]
Remarks: LAMP: CXB1304-0000-000430G Ra: 90
REFLECTOR: AA-022A-F 36R
NOT DRIVER: 9V 350mA
30minutes warm-up

LUMINAIRE PHOTOMETRIC TEST REPORT

Test:U:8.6157V I:0.3499A P:3.0146W PF:1.0000 Freq:49.99Hz Lamp Flux:315.32x1 lm		
NAME: 2018.132	TYPE:	WEIGHT:
SPEC.:3000K	DIM.:	SERIAL No.:2006040204
MFR.: RISE	SUR.:0.000754385m2	Shielding Angle:

DATA OF LAMP		PHOTOMETRIC DATA Eff: 75.01 lm/W			
MODEL	CREE	I _{max} (cd)	597.0	S/MH(C0/180)	0.57
NOMINAL POWER(W)	3	LOR(%)	71.7	S/MH(C90/270)	0.61
RATED VOLTAGE(V)	9	TOTAL FLUX(lm)	226.13	h UP,DN(C0-180)	0.0,36.0
NOMINAL FLUX(lm)	315.32	CIE CLASS	DIRECT	h UP,DN(C180-360)	0.0,35.7
LAMPS INSIDE	1	h up(%)	0.0	CIBSE SHR NOM	0.50
TEST VOLTAGE(V)	9	h down(%)	71.7	CIBSE SHR MAX	0.65



C Range: 0 - 360DEG
C Interval: 30.0DEG
Test Speed: HIGH
Temperature:25.3DEG
Operators:Zoe
Test Date:2020-06-04

g Range: 0 - 180DEG
Interval: 1.0DEG
Test System:EVERFINE GO-SPEX500_V1 SYSTEM V2.00.416
Humidity:65.0%
Test Distance:3.160m [K=1.0000]
Remarks: LAMP:CXB1304-0000-000430G Ra:90
REFLECTOR:AA-022A-F 36R
NOT DRIVER:9V 350mA
30minutes warm-up

ZONAL FLUX DIAGRAM

ZONAL FLUX DIAGRAM:

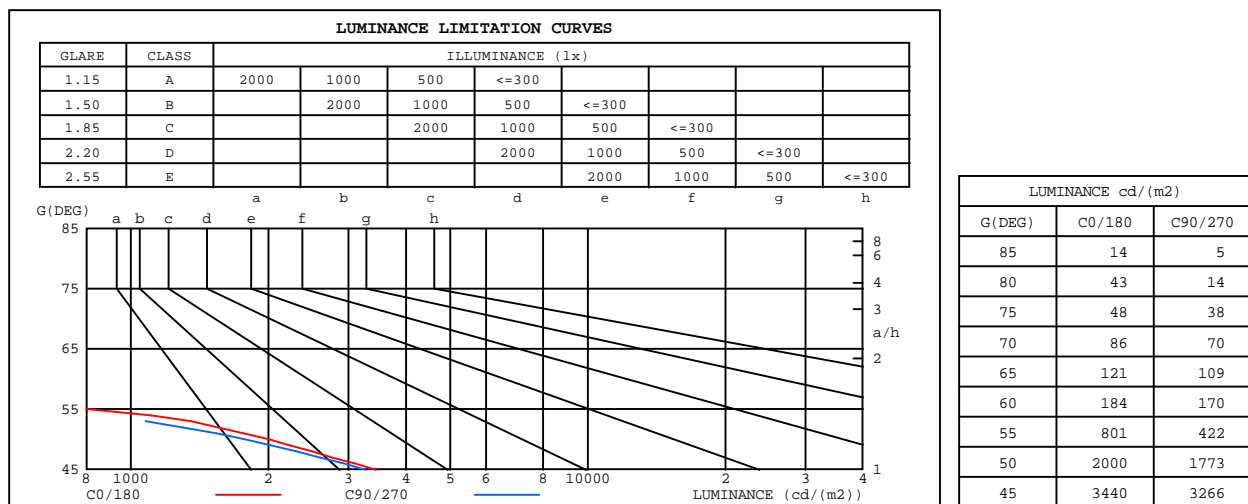
g	C0	C45	C90	C135	C180	C225	C270	C315	g	F zone	F total	%lum,lamp
10	507.4	501.5	489.6	474.9	473.0	482.3	497.1	508.8	0- 10	52.09	52.09	23,16.5
20	286.2	279.3	266.7	249.7	250.5	263.5	278.7	287.8	10- 20	103.9	156.0	69,49.5
30	42.04	39.45	29.50	23.45	22.86	24.85	26.89	36.94	20- 30	62.45	218.5	96.6,69.3
40	3.459	3.683	3.291	2.787	2.598	3.047	3.152	3.100	30- 40	6.033	224.5	99.3,71.2
50	0.9691	0.9599	0.8596	0.7202	0.6498	0.6228	0.7154	0.8726	40- 50	1.327	225.8	99.9,71.6
60	0.0692	0.0680	0.0641	0.0547	0.0469	0.0491	0.0521	0.0605	50- 60	0.2590	226.1	100,71.7
70	0.0221	0.0201	0.0180	0.0140	0.0133	0.0102	0.0144	0.0164	60- 70	0.0324	226.1	100,71.7
80	0.0056	0.0022	0.0019	0	0.0012	0	0.0022	0.0011	70- 80	0.0075	226.1	100,71.7
90	0	0	0	0	0	0	0	0	80- 90	0.0003	226.1	100,71.7
100	0	0	0	0	0	0	0	0	90-100	0	226.1	100,71.7
110	0	0	0	0	0	0	0	0	100-110	0	226.1	100,71.7
120	0	0	0	0	0	0	0	0	110-120	0	226.1	100,71.7
130	0	0	0	0	0	0	0	0	120-130	0	226.1	100,71.7
140	0	0	0	0	0	0	0	0	130-140	0	226.1	100,71.7
150	0	0	0	0	0	0	0	0	140-150	0	226.1	100,71.7
160	0	0	0	0	0	0	0	0	150-160	0	226.1	100,71.7
170	0	0	0	0	0	0	0	0	160-170	0	226.1	100,71.7
180	0	0	0	0	0	0	0	0	170-180	0	226.1	100,71.7
DEG	LUMINOUS INTENSITY:cd									UNIT:lm		

C Range: 0 - 360DEG
C Interval: 30.0DEG
Test Speed: HIGH
Temperature:25.3DEG
Operators:Zoe
Test Date:2020-06-04

g Range: 0 - 180DEG
Interval: 1.0DEG
Test System:EVERFINE GO-SPEX500_V1 SYSTEM V2.00.416
Humidity:65.0%
Test Distance:3.160m [K=1.0000]
Remarks: LAMP:CXB1304-0000-000430G Ra:90
REFLECTOR:AA-022A-F 36R
NOT DRIVER:9V 350mA
30minutes warm-up

LUMINANCE LIMITATION CURVES

Test:U:8.6157V I:0.3499A P:3.0146W PF:1.0000 Freq:49.99Hz Lamp Flux:315.32x1 lm		
NAME: 2018.132	TYPE:	WEIGHT:
SPEC.:3000K	DIM.:	SERIAL No.:2006040204
MFR.: RISE	SUR.:0.000754385m2	Shielding Angle:



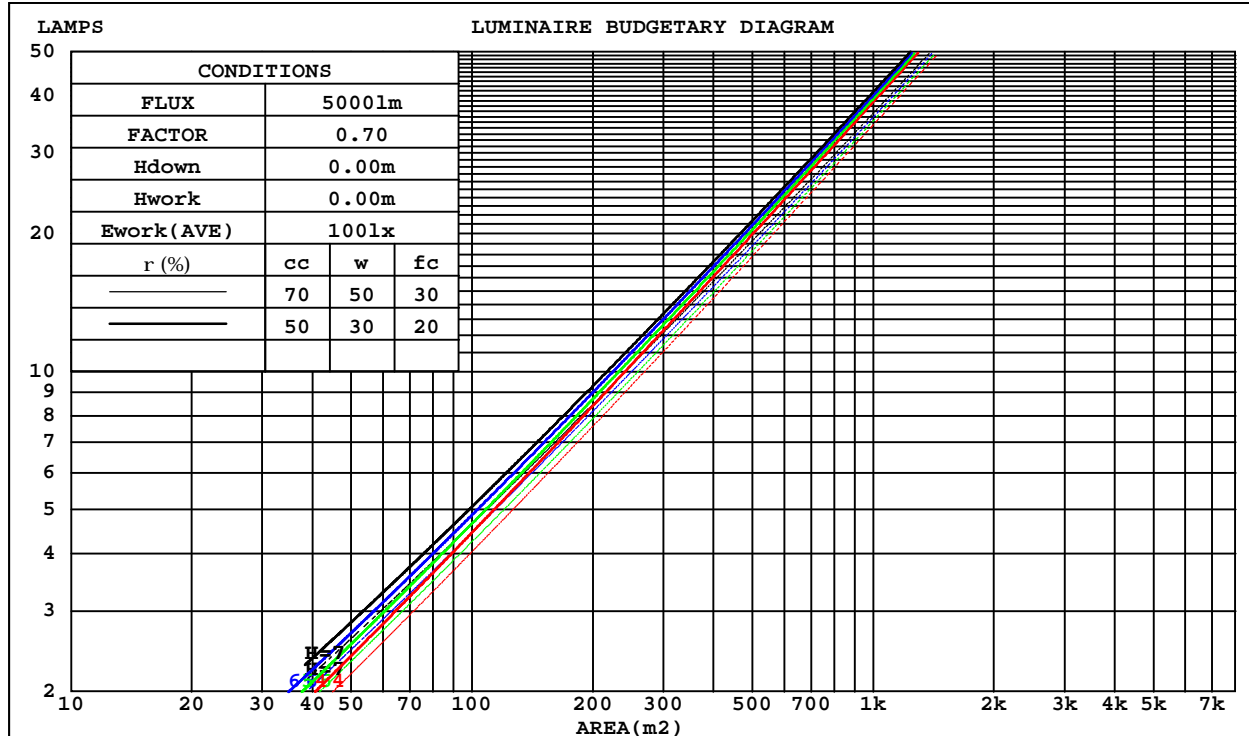
C Range: 0 - 360DEG
C Interval: 30.0DEG
Test Speed: HIGH
Temperature:25.3DEG
Operators:Zoe
Test Date:2020-06-04

G Range: 0 - 180DEG
G Interval: 1.0DEG
Test System:EVERFINE GO-SPEX500_V1 SYSTEM V2.00.416
Humidity:65.0%
Test Distance:3.160m [K=1.0000]
Remarks: LAMP:CXB1304-0000-000430G Ra:90
REFLECTOR:AA-022A-F 36R
NOT DRIVER:9V 350mA
30minutes warm-up

CU AND LUMINAIRE BUDGETARY ESTIMATE DIAGRAM

Test:U:8.6157V I:0.3499A P:3.0146W PF:1.0000 Freq:49.99Hz Lamp Flux:315.32x1 lm		
NAME: 2018.132	TYPE:	WEIGHT:
SPEC.:3000K	DIM.:	SERIAL No.:2006040204
MFR.: RISE	SUR.:0.000754385m2	Shielding Angle:

rcc	80%			70%			50%			30%			10%			0
rw	50%	30%	10%	50%	30%	10%	50%	30%	10%	50%	30%	10%	50%	30%	10%	0
r fc	20%			20%			20%			20%			20%			0
RCR	RCR:Room Cavity Ratio Coefficients of Utilization(CU)															
0.0	.85	.85	.85	.83	.83	.83	.80	.80	.80	.76	.76	.76	.73	.73	.73	.72
1.0	.81	.79	.78	.79	.78	.77	.76	.75	.74	.74	.73	.72	.71	.71	.70	.69
2.0	.76	.74	.72	.75	.73	.71	.73	.71	.70	.71	.70	.68	.69	.68	.67	.66
3.0	.73	.70	.68	.72	.69	.67	.70	.68	.66	.68	.67	.65	.67	.65	.64	.63
4.0	.70	.66	.64	.69	.66	.64	.67	.65	.63	.66	.64	.62	.65	.63	.62	.61
5.0	.67	.63	.61	.66	.63	.61	.65	.62	.60	.64	.61	.60	.63	.61	.59	.58
6.0	.64	.61	.58	.63	.60	.58	.62	.60	.58	.61	.59	.57	.61	.59	.57	.56
7.0	.61	.58	.56	.61	.58	.56	.60	.57	.55	.59	.57	.55	.59	.56	.55	.54
8.0	.59	.56	.53	.59	.56	.53	.58	.55	.53	.57	.55	.53	.57	.54	.53	.52
9.0	.57	.54	.51	.57	.53	.51	.56	.53	.51	.55	.53	.51	.55	.53	.51	.50
10.0	.55	.52	.50	.55	.52	.49	.54	.51	.49	.54	.51	.49	.53	.51	.49	.48



C Range: 0 - 360DEG
C Interval: 30.0DEG
Test Speed: HIGH
Temperature:25.3DEG
Operators:Zoe
Test Date:2020-06-04

g Range: 0 - 180DEG
Interval: 1.0DEG
Test System:EVERFINE GO-SPEX500_V1 SYSTEM V2.00.416
Humidity:65.0%
Test Distance:3.160m [K=1.0000]
Remarks: LAMP:CXB1304-0000-000430G Ra:90
REFLECTOR:AA-022A-F 36R
NOT DRIVER:9V 350mA
30minutes warm-up

WEC AND CCEC

Test:U:8.6157V I:0.3499A P:3.0146W PF:1.0000 Freq:49.99Hz Lamp Flux:315.32x1 lm		
NAME: 2018.132	TYPE:	WEIGHT:
SPEC.:3000K	DIM.:	SERIAL No.:2006040204
MFR.: RISE	SUR.:0.000754385m2	Shielding Angle:

rcc	80%			70%			50%			30%			10%			0
rw	50%	30%	10%	50%	30%	10%	50%	30%	10%	50%	30%	10%	50%	30%	10%	0
rfc	20%			20%			20%			20%			20%			0
RCR	RCR:Room Cavity Ratio Wall Exitance Coefficients(WEC)															
0.0																
1.0	.105	.059	.019	.100	.057	.018	.091	.052	.017	.083	.048	.015	.075	.044	.014	
2.0	.098	.054	.016	.094	.052	.016	.086	.048	.015	.080	.045	.014	.073	.041	.013	
3.0	.092	.049	.015	.088	.047	.014	.082	.045	.014	.076	.042	.013	.071	.039	.012	
4.0	.087	.045	.013	.084	.044	.013	.078	.042	.012	.074	.040	.012	.069	.038	.011	
5.0	.082	.042	.012	.080	.041	.012	.075	.039	.012	.071	.037	.011	.067	.036	.011	
6.0	.078	.039	.011	.076	.038	.011	.072	.037	.011	.068	.036	.010	.065	.034	.010	
7.0	.074	.037	.010	.073	.036	.010	.069	.035	.010	.066	.034	.010	.063	.033	.010	
8.0	.071	.035	.010	.070	.034	.010	.067	.033	.010	.064	.032	.009	.061	.031	.009	
9.0	.068	.033	.009	.067	.033	.009	.064	.032	.009	.062	.031	.009	.059	.030	.009	
10.0	.066	.032	.009	.065	.031	.009	.062	.030	.009	.060	.030	.008	.058	.029	.008	

rcc	80%			70%			50%			30%			10%			0
rw	50%	30%	10%	50%	30%	10%	50%	30%	10%	50%	30%	10%	50%	30%	10%	0
rfc	20%			20%			20%			20%			20%			0
RCR	RCR:Room Cavity Ratio						Ceiling Cavity Exitance Coefficients(CCEC)									
0.0	.137	.137	.137	.117	.117	.117	.080	.080	.080	.046	.046	.046	.015	.015	.015	
1.0	.121	.113	.106	.104	.097	.091	.071	.067	.063	.041	.039	.037	.013	.012	.012	
2.0	.109	.095	.084	.093	.082	.072	.064	.057	.051	.037	.033	.030	.012	.011	.010	
3.0	.098	.081	.068	.084	.070	.059	.058	.049	.041	.033	.028	.024	.011	.009	.008	
4.0	.090	.070	.056	.077	.061	.048	.053	.042	.034	.031	.025	.020	.010	.008	.007	
5.0	.083	.062	.046	.071	.053	.040	.049	.037	.028	.028	.022	.017	.009	.007	.006	
6.0	.077	.055	.039	.066	.047	.034	.045	.033	.024	.026	.019	.014	.008	.006	.005	
7.0	.071	.049	.033	.061	.042	.029	.042	.030	.020	.025	.018	.012	.008	.006	.004	
8.0	.067	.044	.028	.058	.038	.025	.040	.027	.018	.023	.016	.010	.008	.005	.003	
9.0	.063	.040	.025	.054	.035	.022	.038	.025	.015	.022	.014	.009	.007	.005	.003	
10.0	.060	.037	.022	.052	.032	.019	.036	.023	.013	.021	.013	.008	.007	.004	.003	

C Range: 0 - 360DEG
 C Interval: 30.0DEG
 Test Speed: HIGH
 Temperature:25.3DEG
 Operators:Zoe
 Test Date:2020-06-04

g Range: 0 - 180DEG
 g Interval: 1.0DEG
 Test System:EVERFINE GO-SPEX500_V1 SYSTEM V2.00.416
 Humidity:65.0%
 Test Distance:3.160m [K=1.0000]
 Remarks: LAMP:CXB1304-0000-000430G Ra:90
 REFLECTOR:AA-022A-F 36R
 NOT DRIVER:9V 350mA
 30minutes warm-up

UGR(Unified Glare Rating) Table

Test:U:8.6157V I:0.3499A P:3.0146W PF:1.0000 Freq:49.99Hz Lamp Flux:315.32x1 lm										
NAME: 2018.132					TYPE:			WEIGHT:		
SPEC.:3000K					DIM.:			SERIAL No.:2006040204		
MFR.: RISE					SUR.:0.000754385m2			Shielding Angle:		
ceiling/cavity	0.7	0.7	0.5	0.5	0.3	0.7	0.7	0.5	0.5	0.3
walls	0.5	0.3	0.5	0.3	0.3	0.5	0.3	0.5	0.3	0.3
working plane	0.2	0.2	0.2	0.2	0.2	0.2	0.2	0.2	0.2	0.2
Room dimensions	Viewed crosswise					Viewed endwise				
x = 2H y = 2H	7.6	8.3	7.8	8.5	8.6	6.0	6.7	6.2	6.8	7.0
3H	7.5	8.1	7.7	8.3	8.5	5.8	6.5	6.0	6.7	6.8
4H	7.4	8.0	7.6	8.2	8.4	5.7	6.4	6.0	6.6	6.8
6H	7.3	7.9	7.6	8.1	8.4	5.6	6.2	5.9	6.5	6.7
8H	7.2	7.8	7.5	8.1	8.3	5.6	6.2	5.9	6.4	6.7
12H	7.2	7.7	7.5	8.0	8.3	5.5	6.1	5.9	6.4	6.6
4H 2H	7.4	8.0	7.6	8.2	8.4	5.7	6.4	6.0	6.6	6.8
3H	7.2	7.8	7.5	8.0	8.3	5.6	6.1	5.9	6.4	6.6
4H	7.1	7.6	7.4	7.9	8.2	5.5	6.0	5.8	6.3	6.6
6H	7.0	7.5	7.4	7.8	8.1	5.4	5.8	5.7	6.1	6.5
8H	7.0	7.4	7.3	7.7	8.1	5.3	5.7	5.7	6.1	6.4
12H	6.9	7.3	7.3	7.6	8.0	5.3	5.6	5.7	6.0	6.4
8H 4H	7.0	7.4	7.3	7.7	8.1	5.3	5.7	5.7	6.1	6.4
6H	6.8	7.2	7.3	7.6	8.0	5.2	5.5	5.6	5.9	6.3
8H	6.8	7.1	7.2	7.5	7.9	5.1	5.4	5.6	5.9	6.3
12H	6.7	7.0	7.2	7.4	7.9	5.1	5.3	5.5	5.8	6.2
12H 4H	6.9	7.3	7.3	7.6	8.0	5.3	5.6	5.7	6.0	6.4
6H	6.8	7.1	7.2	7.5	7.9	5.1	5.4	5.6	5.9	6.3
8H	6.7	7.0	7.2	7.4	7.9	5.1	5.3	5.5	5.8	6.2
Variations with the observer position at spacings:										
S = 1.0H	+ 3.4 / -16.3					+ 2.8 / -16.6				
1.5H	+ 4.9 / -12.4					+ 4.4 / -14.0				
2.0H	+ 5.9 / -13.6					+ 6.0 / -13.9				

CIE Pub.117, 315.3 lm Total Lamp Luminous Flux Corrected (8log(F/F0) = -4.0)
Area: 0.000754385 m2

C Range: 0 - 360DEG
C Interval: 30.0DEG
Test Speed: HIGH
Temperature:25.3DEG
Operators:Zoe
Test Date:2020-06-04

g Range: 0 - 180DEG
g Interval: 1.0DEG
Test System:EVERFINE GO-SPEX500_V1 SYSTEM V2.00.416
Humidity:65.0%
Test Distance:3.160m [K=1.0000]
Remarks: LAMP:CXB1304-0000-000430G Ra:90
REFLECTOR:AA-022A-F 36R
NOT DRIVER:9V 350mA
30minutes warm-up

UTILIZATION FACTORS TABLE

Test:U:8.6157V I:0.3499A P:3.0146W PF:1.0000 Freq:49.99Hz Lamp Flux:315.32x1 lm		
NAME: 2018.132	TYPE:	WEIGHT:
SPEC.:3000K	DIM.:	SERIAL No.:2006040204
MFR.: RISE	SUR.:0.000754385m2	Shielding Angle:

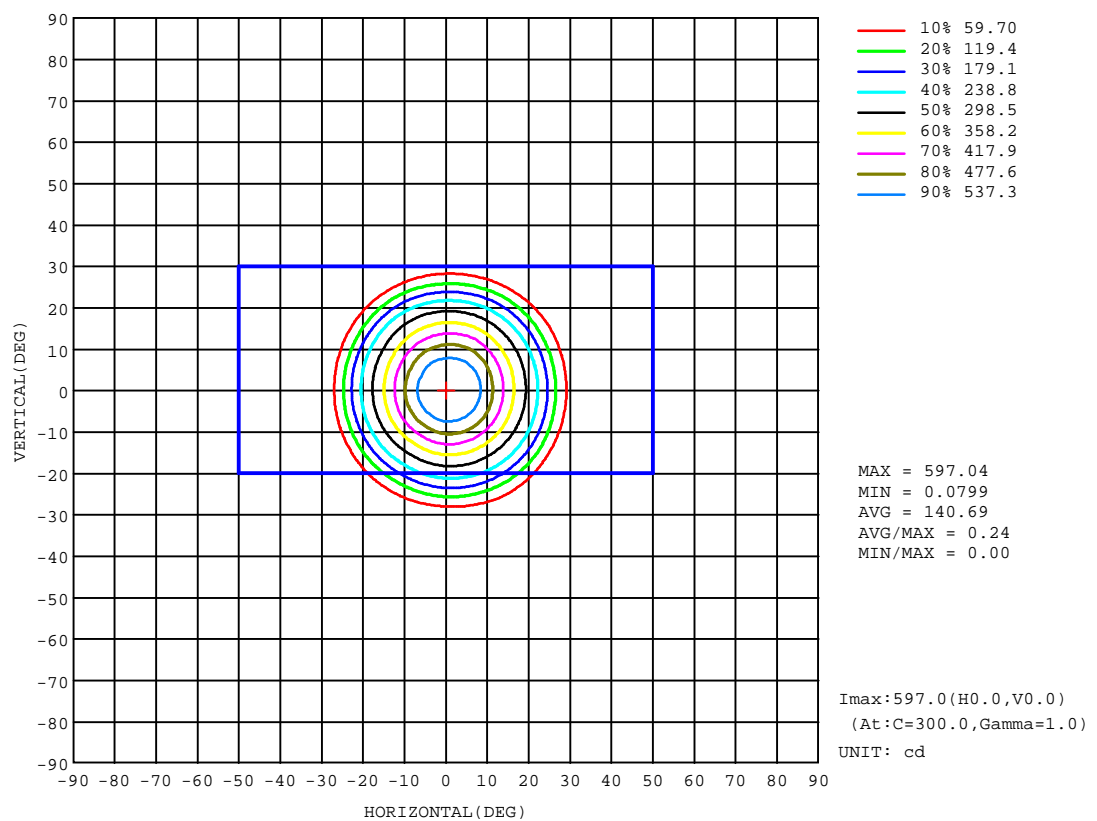
REFLECTANCE										
Ceiling	0.8	0.8	0.8	0.7	0.7	0.7	0.5	0.5	0.5	0
Walls	0.7	0.5	0.3	0.7	0.5	0.3	0.7	0.5	0.3	0
Working plane	0.2	0.2	0.2	0.2	0.2	0.2	0.2	0.2	0.2	0
ROOM INDEX	UTILIZATION FACTORS(PERCENT) $k(RI) \times RCR = 5$									
k = 0.60	65	61	59	65	61	59	64	61	59	56
0.80	70	67	64	70	66	64	69	66	64	62
1.00	73	69	67	72	69	67	71	69	67	64
1.25	76	72	70	75	72	70	73	71	69	66
1.50	77	74	72	76	74	72	75	73	71	68
2.00	79	76	74	78	75	74	76	74	72	69
2.50	80	77	75	79	77	75	77	75	73	69
3.00	81	79	77	80	78	76	77	76	75	70
4.00	82	80	79	81	79	78	78	77	76	71
5.00	83	82	80	81	80	79	79	78	77	72
ROOM INDEX	UF(total)									Direct
According to DIN EN 13032-2 2004			Suspended					SHRNOM = 1.25		

C Range: 0 - 360DEG
 C Interval: 30.0DEG
 Test Speed: HIGH
 Temperature:25.3DEG
 Operators:Zoe
 Test Date:2020-06-04

g Range: 0 - 180DEG
 g Interval: 1.0DEG
 Test System:EVERFINE GO-SPEX500_V1 SYSTEM V2.00.416
 Humidity:65.0%
 Test Distance:3.160m [K=1.0000]
 Remarks: LAMP:CXB1304-0000-000430G Ra:90
 REFLECTOR:AA-022A-F 36R
 NOT DRIVER:9V 350mA
 30minutes warm-up

ISOCANDELA DIAGRAM

Test:U:8.6157V I:0.3499A P:3.0146W PF:1.0000 Freq:49.99Hz Lamp Flux:315.32x1 lm		
NAME: 2018.132	TYPE:	WEIGHT:
SPEC.:3000K	DIM.:	SERIAL No.:2006040204
MFR.: RISE	SUR.:0.000754385m2	Shielding Angle:

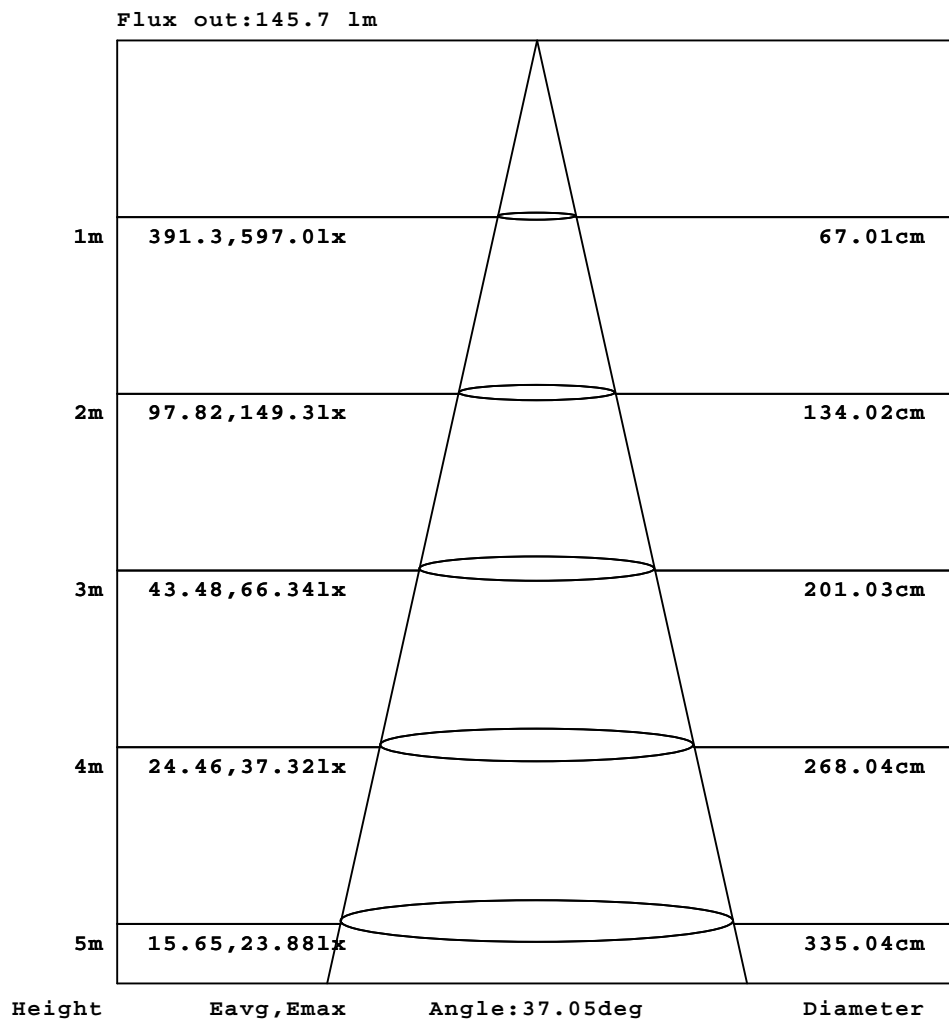


C Range: 0 - 360DEG
C Interval: 30.0DEG
Test Speed: HIGH
Temperature:25.3DEG
Operators:Zoe
Test Date:2020-06-04

g Range: 0 - 180DEG
Interval: 1.0DEG
Test System:EVERFINE GO-SPEX500_V1 SYSTEM V2.00.416
Humidity:65.0%
Test Distance:3.160m [K=1.0000]
Remarks: LAMP:CXB1304-0000-000430G Ra:90
REFLECTOR:AA-022A-F 36R
NOT DRIVER:9V 350mA
30minutes warm-up

AAI Figure

Test:U:8.6157V I:0.3499A P:3.0146W PF:1.0000 Freq:49.99Hz Lamp Flux:315.32x1 lm		
NAME: 2018.132	TYPE:	WEIGHT:
SPEC.:3000K	DIM.:	SERIAL No.:2006040204
MFR.: RISE	SUR.:0.000754385m2	Shielding Angle:



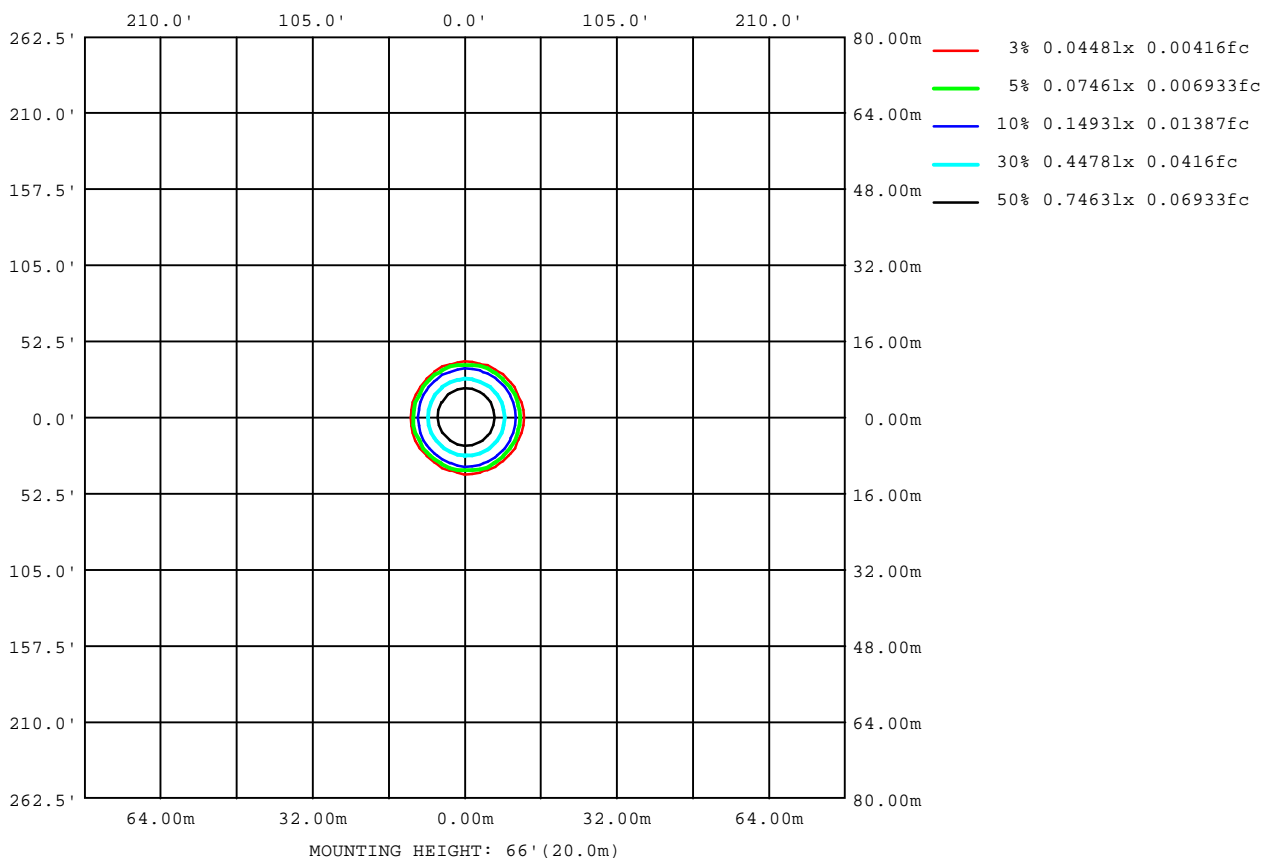
Note:The Curves indicate the illuminated area and the average illumination when the luminaire is at different distance.

C Range: 0 - 360DEG
C Interval: 30.0DEG
Test Speed: HIGH
Temperature:25.3DEG
Operators:Zoe
Test Date:2020-06-04

g Range: 0 - 180DEG
Interval: 1.0DEG
Test System:EVERFINE GO-SPEX500_V1 SYSTEM V2.00.416
Humidity:65.0%
Test Distance:3.160m [K=1.0000]
Remarks: LAMP:CXB1304-0000-000430G Ra:90
REFLECTOR:AA-022A-F 36R
NOT DRIVER:9V 350mA
30minutes warm-up

ISOLUX DIAGRAM

Test:U:8.6157V I:0.3499A P:3.0146W PF:1.0000 Freq:49.99Hz Lamp Flux:315.32x1 lm		
NAME: 2018.132	TYPE:	WEIGHT:
SPEC.:3000K	DIM.:	SERIAL No.:2006040204
MFR.: RISE	SUR.:0.000754385m2	Shielding Angle:



C Range: 0 - 360DEG
C Interval: 30.0DEG
Test Speed: HIGH
Temperature:25.3DEG
Operators:Zoe
Test Date:2020-06-04

g Range: 0 - 180DEG
g Interval: 1.0DEG
Test System:EVERFINE GO-SPEX500_V1 SYSTEM V2.00.416
Humidity:65.0%
Test Distance:3.160m [K=1.0000]
Remarks: LAMP:CXB1304-0000-000430G Ra:90
REFLECTOR:AA-022A-F 36R
NOT DRIVER:9V 350mA
30minutes warm-up

LED Avg.L Report

Test:U:8.6157V I:0.3499A P:3.0146W PF:1.0000 Freq:49.99Hz Lamp Flux:315.32x1 lm		
NAME: 2018.132	TYPE:	WEIGHT:
SPEC.:3000K	DIM.:	SERIAL No.:2006040204
MFR.: RISE	SUR.:0.000754385m2	Shielding Angle:

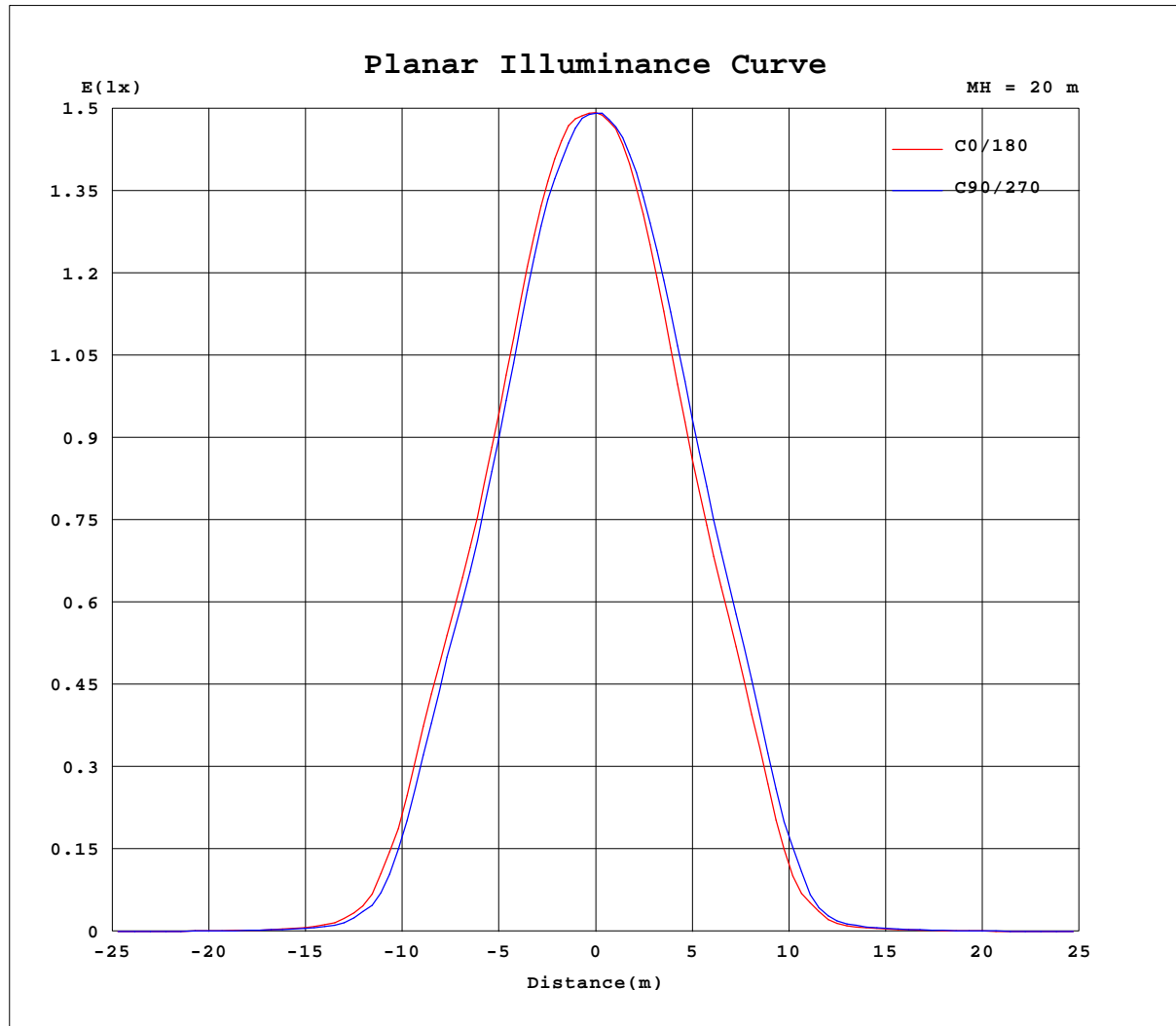
AvgL	cd/m2
L_0~180(65)av	102
L_0~180(75)av	40
L_0~180(85)av	7
L_90~270(65)av	98
L_90~270(75)av	34
L_90~270(85)av	2
L_45(65)av	94
L_45(75)av	30
L_45(85)av	0

Standard: GB/T 29293-2012

C Range: 0 - 360DEG
C Interval: 30.0DEG
Test Speed: HIGH
Temperature:25.3DEG
Operators:Zoe
Test Date:2020-06-04

g Range: 0 - 180DEG
g Interval: 1.0DEG
Test System:EVERFINE GO-SPEX500_V1 SYSTEM V2.00.416
Humidity:65.0%
Test Distance:3.160m [K=1.0000]
Remarks: LAMP:CXB1304-0000-000430G Ra:90
REFLECTOR:AA-022A-F 36R
NOT DRIVER:9V 350mA
30minutes warm-up

Planar Illuminance Curve



C Range: 0 - 360DEG
 C Interval: 30.0DEG
 Test Speed: HIGH
 Temperature: 25.3DEG
 Operators: Zoe
 Test Date: 2020-06-04

deg Range: 0 - 180DEG
 deg Interval: 1.0DEG
 Test System: EVERFINE GO-SPEX500_V1 SYSTEM V2.00.416
 Humidity: 65.0%
 Test Distance: 3.160m [K=1.0000]
 Remarks: LAMP: CXB1304-0000-000430G Ra: 90
 REFLECTOR: AA-022A-F 36R
 NOT DRIVER: 9V 350mA
 30minutes warm-up

LUMINOUS DISTRIBUTION INTENSITY DATA

Test:U:8.6157V I:0.3499A P:3.0146W PF:1.0000 Freq:49.99Hz Lamp Flux:315.32x1 lm		
NAME: 2018.132	TYPE:	WEIGHT:
SPEC.:3000K	DIM.:	SERIAL No.:2006040204
MFR.: RISE	SUR.:0.000754385m2	Shielding Angle:

Table--1

UNIT: cd

C(°) g (°)	0	30	60	90	120	150	180	210	240	270	300	330						
0	597	597	597	597	597	597	597	597	597	597	597	597						
5	583	582	574	569	565	565	566	565	572	573	580	584						
10	507	505	498	490	477	473	473	476	489	497	509	509						
15	391	388	381	372	356	356	356	361	377	388	399	396						
20	286	283	276	267	251	249	251	255	272	279	287	288						
25	167	166	154	140	117	112	110	113	131	140	157	163						
30	42.0	41.5	37.4	29.5	21.3	25.6	22.9	20.8	28.9	26.9	34.2	39.7						
35	9.48	8.77	9.35	6.95	5.64	5.26	5.05	5.53	7.14	6.45	6.46	8.01						
40	3.46	3.64	3.73	3.29	2.86	2.71	2.60	2.70	3.40	3.15	3.09	3.11						
45	1.83	1.90	1.90	1.74	1.53	1.41	1.36	1.37	1.61	1.61	1.68	1.71						
50	0.97	0.98	0.94	0.86	0.76	0.68	0.65	0.61	0.64	0.72	0.84	0.90						
55	0.35	0.32	0.23	0.18	0.12	0.11	0.10	0.10	0.12	0.17	0.26	0.31						
60	0.07	0.07	0.07	0.06	0.06	0.05	0.05	0.05	0.05	0.05	0.06	0.06						
65	0.04	0.04	0.04	0.03	0.03	0.02	0.03	0.02	0.03	0.03	0.03	0.03						
70	0.02	0.02	0.02	0.02	0.02	0.01	0.01	0.01	0.01	0.01	0.01	0.02						
75	0.01	0.01	0.01	0.01	0.00	0.00	0.01	0.00	0.00	0.01	0.01	0.01						
80	0.01	0.00	0.00	0.00	0.00	0.00	0.00	0.00	0.00	0.00	0.00	0.00						
85	0.00	0.00	0.00	0.00	0.00	0.00	0.00	0.00	0.00	0.00	0.00	0.00						
90	0.00	0.00	0.00	0.00	0.00	0.00	0.00	0.00	0.00	0.00	0.00	0.00						
95	0.00	0.00	0.00	0.00	0.00	0.00	0.00	0.00	0.00	0.00	0.00	0.00						
100	0.00	0.00	0.00	0.00	0.00	0.00	0.00	0.00	0.00	0.00	0.00	0.00						
105	0.00	0.00	0.00	0.00	0.00	0.00	0.00	0.00	0.00	0.00	0.00	0.00						
110	0.00	0.00	0.00	0.00	0.00	0.00	0.00	0.00	0.00	0.00	0.00	0.00						
115	0.00	0.00	0.00	0.00	0.00	0.00	0.00	0.00	0.00	0.00	0.00	0.00						
120	0.00	0.00	0.00	0.00	0.00	0.00	0.00	0.00	0.00	0.00	0.00	0.00						
125	0.00	0.00	0.00	0.00	0.00	0.00	0.00	0.00	0.00	0.00	0.00	0.00						
130	0.00	0.00	0.00	0.00	0.00	0.00	0.00	0.00	0.00	0.00	0.00	0.00						
135	0.00	0.00	0.00	0.00	0.00	0.00	0.00	0.00	0.00	0.00	0.00	0.00						
140	0.00	0.00	0.00	0.00	0.00	0.00	0.00	0.00	0.00	0.00	0.00	0.00						
145	0.00	0.00	0.00	0.00	0.00	0.00	0.00	0.00	0.00	0.00	0.00	0.00						
150	0.00	0.00	0.00	0.00	0.00	0.00	0.00	0.00	0.00	0.00	0.00	0.00						
155	0.00	0.00	0.00	0.00	0.00	0.00	0.00	0.00	0.00	0.00	0.00	0.00						
160	0.00	0.00	0.00	0.00	0.00	0.00	0.00	0.00	0.00	0.00	0.00	0.00						
165	0.00	0.00	0.00	0.00	0.00	0.00	0.00	0.00	0.00	0.00	0.00	0.00						
170	0.00	0.00	0.00	0.00	0.00	0.00	0.00	0.00	0.00	0.00	0.00	0.00						
175	0.00	0.00	0.00	0.00	0.00	0.00	0.00	0.00	0.00	0.00	0.00	0.00						
180	0.00	0.00	0.00	0.00	0.00	0.00	0.00	0.00	0.00	0.00	0.00	0.00						

C Range: 0 - 360DEG
C Interval: 30.0DEG
Test Speed: HIGH
Temperature:25.3DEG
Operators:Zoe
Test Date:2020-06-04

g Range: 0 - 180DEG
g Interval: 1.0DEG
Test System:EVERFINE GO-SPEX500_V1 SYSTEM V2.00.416
Humidity:65.0%
Test Distance:3.160m [K=1.0000]
Remarks: LAMP:CXB1304-0000-000430G Ra:90
REFLECTOR:AA-022A-F 36R
NOT DRIVER:9V 350mA
30minutes warm-up